



**Project:**

Bayou Boeuf  
Swing Span Rail Road Bridge  
KECI Job No. 081217

**Location:**

BNSF Railway Company  
Bridge 73.31 over the Bayou Boeuf  
on L.S. 1281 Near Amelia, Louisiana

**Owner:**

BNSF Railway Company  
4515 Kansas Avenue  
Kansas City, KS 66106  
Byron Borns  
Ph. (913)551-4176  
Fax (913)551-4099

**General Contractor:**

OCCI  
3200 County Road 257  
Fulton, Missouri 65251-3101  
Ted Kettlewell  
Ph. (573)642-5763

**Architect Engineer:**

Harrington & Cortelyou, Inc.

**Subcontractor:**

Koontz Electric Company, Inc.  
1223 E Broadway  
Morrilton, AR 72110

**Start & Completion Date:**

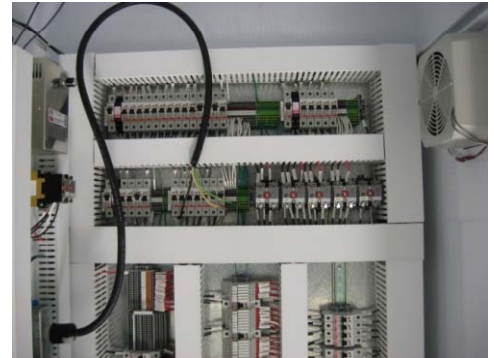
November 2008/ January 2010

**Original / Final Contract Amount:**

\$2,636,577 / \$2,796,031

**Scope of Work:**

Koontz Electric was awarded the electrical, controls, instrumentation, and PLC programming for the Bayou Boeuf swing span rail road bridge over the Bayou Boeuf near Amelia, Louisiana for Burlington Northern and Santa Fe Railway Company. This railway bridge has to be changed out in a 96- hour window, from start to finish so railway and navigation traffic will not be interrupted. This work includes the following feature of work:



- Installation of submarine cable from the land to the center pier of the swing span structure.
- Installation of new grounding system.
- Installation of (8) cable termination cabinets.
- Installation of (1) new generator house.
- Installation of (1) new operator control house.
- Installation of (1) new motor control center.
- Installation of (1) new electrical service.
- Installation of (1) 100-KW emergency generator, annunciator panel, and automatic transfer switch.
- Installation of (1) public address system to include desk top microphones and bidirectional loud speakers.
- Installation of (2) navigation horns.
- Installation of (22) navigation lights.
- Installation of closed circuit television system to include server rack, digital recorder, monitors, and illuminator cameras.
- Installation of fire alarm system.
- Installation of lightning protection system.
- Installation of telephone and data system.
- Installation of (1) rotating cam limit switches.
- Installation of new absolute encoders.
- Installation of (10) wedge limit switches.
- Installation of (12) joint limit switches.
- Installation of (2) Flux Vector Drives.
- Installation of (2) flux vector motors.
- Installation of Bridge Closed Plunger Limit Switches.
- Installation of electrical panels, transformers, and disconnect switches.
- Installation of new lighting.
- Construction of new PLC control cabinet.
- Construction of new rail system operator bench board.
- Perform all PLC programming.
- Perform Arc Flash Protection Study.

# Bayou Boeuf Swing Span Rail Road Bridge